



111-A Woodwinds Industrial Court
Cary, NC 27511
USA

Phone: 1-919-481-4494

Fax: 1-919-460-3828

www.caryaudio.com

info@caryaudio.com

CAD-845

Single-Ended Stereo Amplifier

OPERATING MANUAL

Note:

Before installing your new CAD-845 amplifier, please read this manual carefully as it will inform you of the specifications, proper installation and operating procedures. Also included are guidelines on how to care for your new CAD-845.

UNITED STATES LIMITED WARRANTY

Audio Electronics warrants to the original United States purchaser for use in the United States, that this product shall be free from defects in material (except tubes and AF output transistors) or workmanship for:

Amplifiers and Preamplifiers, Three (3) years from the date of the original purchase.

Speakers, Five (5) years from the date of the original purchase.

Digital Products, One (1) year from the date of original purchase.

During the warranty period, Audio Electronics or an authorized Audio Electronics service facility will provide free of charge both parts (except tubes and AF output transistors) and labor necessary to correct defects in material or workmanship.

To obtain such warranty service, the original purchaser must:

- (1) Complete and send in the warranty Registration Card.
- (2) Notify Audio Electronics as soon as possible after the discovery of a possible defect:
 - (a) The model number and serial number.
 - (b) The identity of the seller and the approximate date of purchase.
 - (c) A detailed description of the problem, including details on the electrical connection in the associated equipment and the list of such equipment.
- (3) Deliver the product to Audio Electronics or the nearest authorized service facility, or ship the same in its original container or equivalent, fully insured and the shipping charges prepaid.

Correct maintenance, repair and use are important to obtain optimum performance from this product. Therefore, carefully read the Operational Manual. This warranty does not apply to any defect that Audio Electronics in its sole discretion determines is due to:

- (1) Improper maintenance or repair, including the installation of parts or accessories that do not conform to the quality and the specifications of the original parts.
- (2) Misuse, abuse, neglect or improper installation.
- (3) Accidental or incidental damage.

WARRANTY DISCLAIMER

Except for the express warranties stated herein, Audio Electronics disclaims all other warranties including, without limitation, all implied warranties of merchantability and fitness for a particular purpose.

EXCLUSIVE REMEDY

Notwithstanding the foregoing, the purchaser's exclusive remedy for any breach of warranty, express or implied, is limited to the repair or replacement of the defective unit or the refund of the purchase price, at the option of Audio Electronics. Under no circumstances is Audio Electronics liable for incidental or consequential damages. Any implied warranties imposed by law terminate one (1) year from the date of purchase.

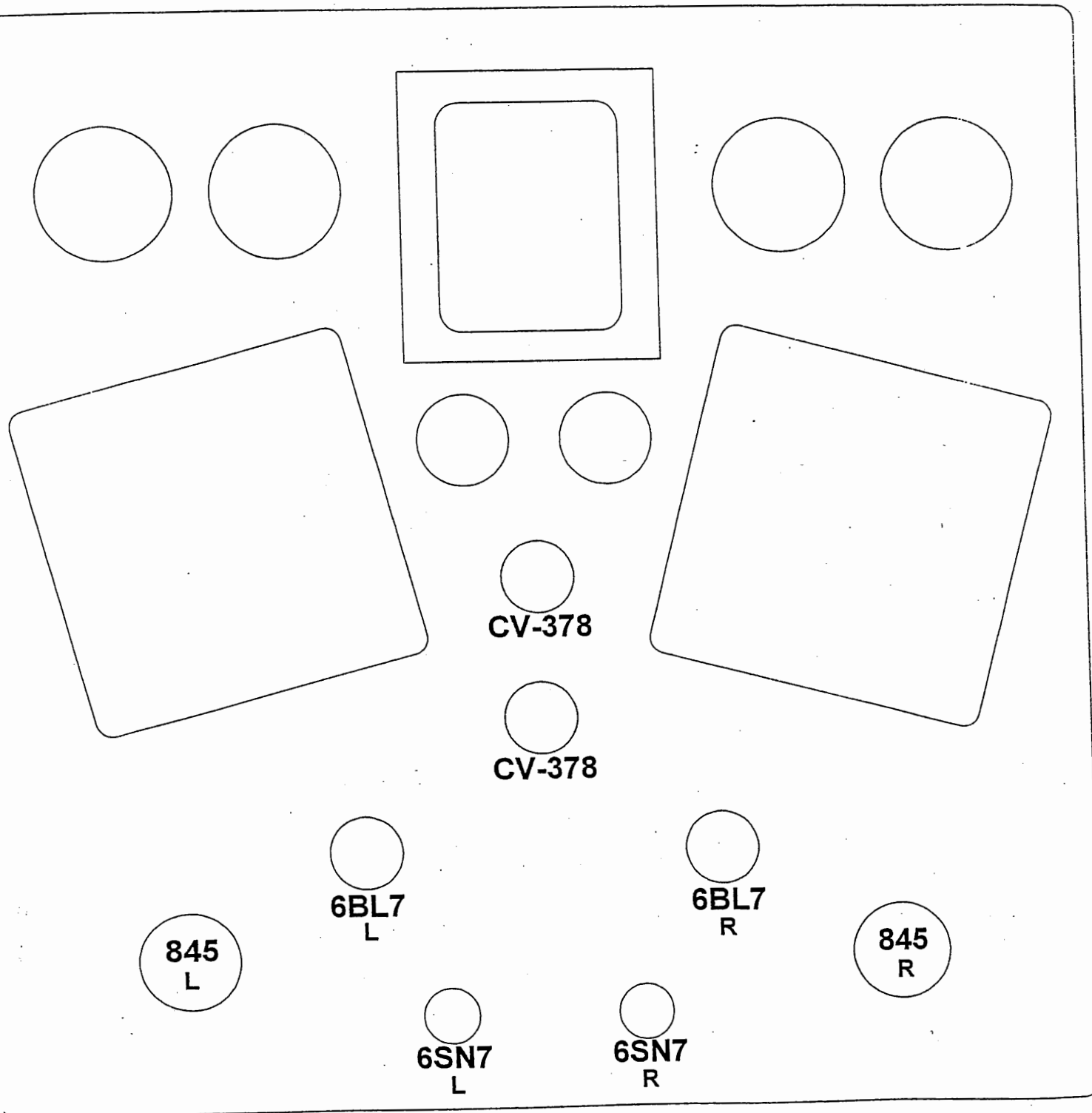
FOREIGN PURCHASERS

Audio Electronics warrants its merchandise to purchasers in the United States for use in the United States. It provides no other warranties.

The foregoing constitutes Audio Electronics entire obligation with respect to this product, and the original purchaser and any user or owner shall have no other claim for incidental or consequential damages, so the above limitation and exclusion may not apply to you.

This warranty gives legal rights and you may also have other rights which vary from state to state.

845 - SE Tube Placement



Operating the CAD-845 amplifier is a simple procedure since each unit is designed for long term stability in virtually any home operating situation. Therefore, if the unit is operated outside the parameters outlined in this owner's manual, damage may result. Please read this manual carefully before putting your new Cary Audio Design CAD-845 in operation.

When the cautionary terms are used in this manual, the following apply:

WARNING: Electrical hazard! Misuse or failure to follow instructions properly may result in personal injury or death!

CAUTION: No risk of personal injury; however, misuse or failure to follow instructions may result in damage to equipment.

NOTE: No risk of personal injury or equipment damage; however, misuse or failure to follow instructions may prevent proper performance of the equipment.

1.1 Specifications

DIMENSIONS:	8.5"H x 17"W x 17"D
WEIGHT:	90 lb.
CIRCUIT TYPE:	Single Ended Amplification in Class A
POWER OUTPUT:	4/8 ohms = 25 Watts per channel
INPUT SENSITIVITY:	1.0 volts for full output
INPUT IMPEDANCE:	150,000 ohms
NOISE AND HUM:	90dB below rated output
FREQUENCY RESPONSE:	20 Hz to 20,000Hz +0-0.75dB
TRANSFORMERS:	1-EI laminated core power transformer 2-Special air gap output transformer 200% duty cycle on all transformers
TUBES:	2-6SN7, 2-6BL7, 2-CV378 & 2-845 output tubes
RESISTORS:	1% metal film
CAPACITORS:	Oil filled

POWER SUPPLY CAPACITORS: 4-1200 MFD @ 450VDC, 2-800 MFD @ 400VDC

AC CORD: 3 conductor shielded

AC POWER REQUIREMENTS: 117 volts AC 50/60Hz
220 volts AC 50/60Hz

WARM-UP TIME: 3 minutes

BREAK-IN PERIOD: 100 hours of music playing time

FINISH: Nickel chrome plated stainless steel

1.2 Front Panel Features

AC POWER: Turn AC power on and off.

STAND-BY-OPERATE: Turns B+ on when switched to "OPERATE" position.

1.3 Rear Apron Features

INPUT: Signal input connection via shielded interconnect cable

OUTPUTS: The 5-way binding posts provide the output to the speaker system.

AC: 3 conductor shielded power cord to AC power mains

SPEAKER SWITCH: "UP" position for 8 ohm
"DOWN" position for 4 ohm

FUSE: AC power fuse. Never replace with any other fuse than 5 AMP SLOW BLOW! 250 VOLT!

BIAS JACK: For 1/4" bias plug to measure the 845 bias.(See instructions)

BIAS POT: Screwdriver adjustment potentiometer to set bias. (See instructions)

CAUTION

Equipment damage may occur with improper fuses.

CAUTION

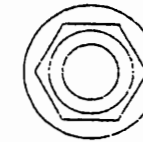
Use of any other protection fuse can damage unit.

CAUTION

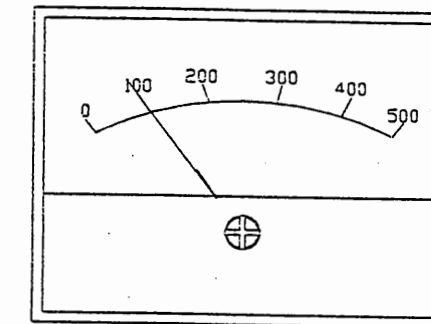
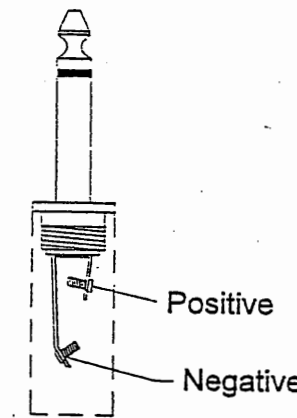
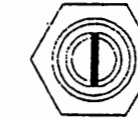
Never remove/insert the AC line cord when the unit is "ON".

CAD-845 Bias Adjustment

Bias Meter Jack



Bias Adjust



Set bias for both sides of the amplifier to 100mA

Insert meter plug into bias jack.
Adjust for 100mA reading on VOM or DC current meter.
Readjust to 100mA after after 845 is warmed up for
10 minutes. Remove plug and enjoy the music!

Note: Bias is factory preset; Bias should be reset when installing replacement 845 tubes.