

CARY AUDIO DESIGN, INC.

**CAD - 300PB
POWER CAPACITOR BANK**

**OPERATING
MANUAL**

NOTE:

Before installing your new Power Bank, please read this manual carefully. This manual will inform you of the Power Bank's specifications, proper installation procedures and operation procedures. Also included in this manual are guide-lines on how to properly service and care for your new Power Bank.

IMPORTANT . . .

DO NOT PROCEED BEFORE READING

THE FOLLOWING CAUTION ! ! !

CAUTION

THE CAD-300PB POWER CAPACITOR BANK WHEN INSTALLED AND OPERATED PROPERLY IS A SAFE AND RELIABLE ACCESSORY TO YOUR CARY AUDIO DESIGN AMPLIFIER

EXTREME CAUTION MUST BE USED WHEN INSTALLING OR REMOVING YOUR NEW POWER BANK! VOLTAGES CONTAINED INSIDE BOTH THE AMPLIFIER AND THE POWER BANK ARE OVER 400 VOLTS DC AND CAN BE LETHAL!

YOU MUST FOLLOW THE INSTRUCTIONS LISTED IN THE NEXT SECTION

HOOK-UP FOR AMPLIFIERS WITHOUT A 5 PIN DIN CONNECTOR

WARNING!!!

Do not attempt to make the connection described below unless the amplifier(s) have been off for 24 hours, or unless they have been properly discharged. Contact with voltages in the amplifier(s) can be fatal!!!

- (1.)* Unplug your amplifier(s) from the AC power mains.
- (2.) Remove all tubes from the amplifier(s). Turn over and remove the bottom plates.
- (3.) Wait at least 10 minutes for the bleeder resistors to discharge most of the power supply voltage. Connect a 100 ohm 5 watt resistor across one of the 1200mFd electrolytics, then connect a direct short across the same electrolytic to remove all of the voltage.
- (4.) Drill a 1/4" hole in the bottom plate as indicated in the bottom view pictorial. Insert a grommet to protect the hook-up cable.
- (5.) Insert the cable through the bottom plate and connect as shown in Figure 1. Simply unscrew the terminal bolts and add the solder lug to the existing solder lugs. White (+) Black(-).
- (6.) Re-install the bottom plate(s). Connect the 5-pin DIN connector on the capacitor bank.
- (7.) Install tubes and turn the amplifier(s) on. If the amplifier AC fuse blows then one or both sides of the capacitor bank is connected backward. If the blue led's on the front of the cap bank light, then everything is OK.

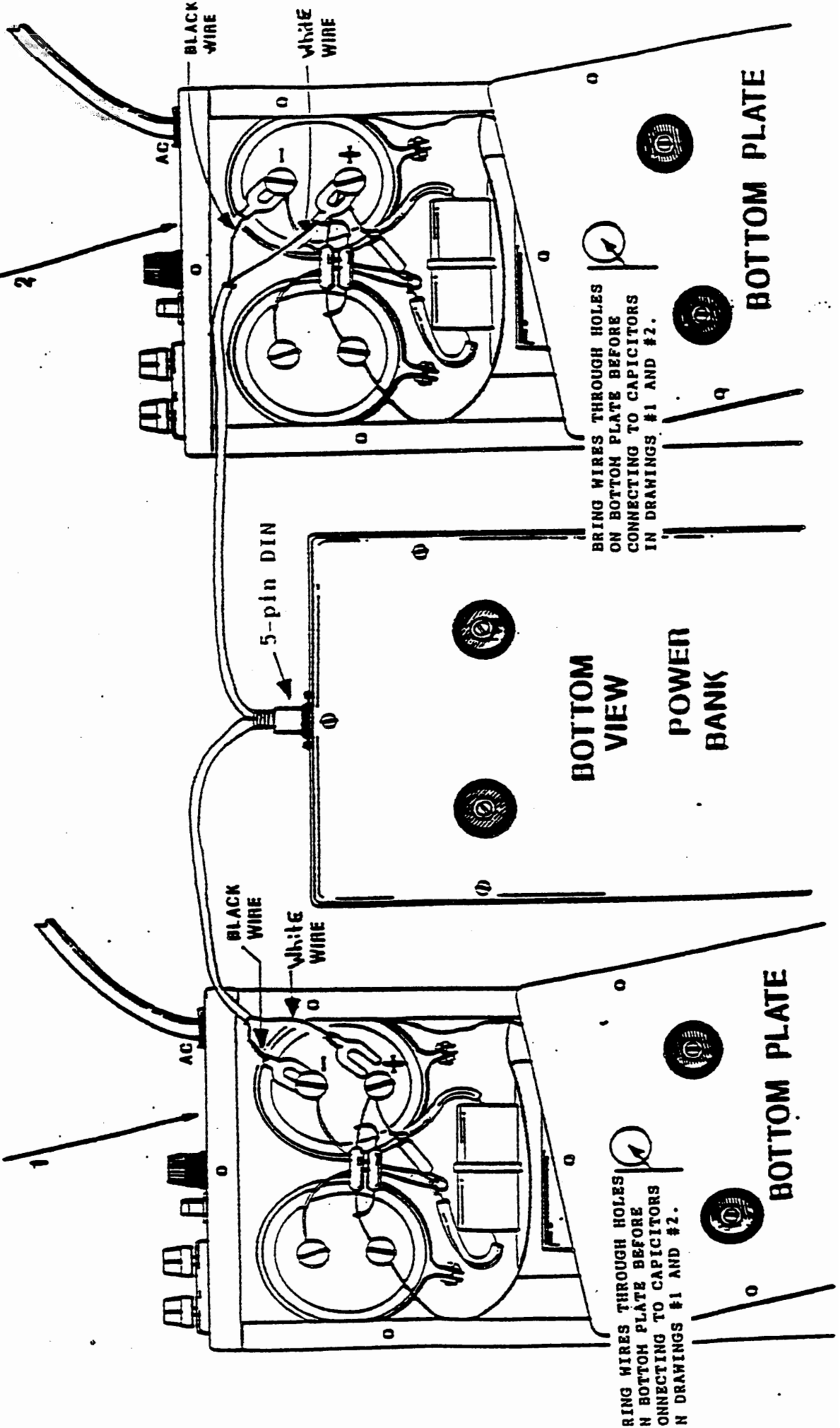
Figure 1: For amplifiers without 5-pin DIN connectors.

WARNING!!! DO NOT ATTEMPT TO MAKE THE CONNECTION SHOWN BELOW UNLESS THE AMPLIFIERS HAVE BEEN OFF FOR 24 HOURS, OR UNLESS THEY HAVE BEEN PROPERLY DISCHARGED. CONTACT WITH VOLTAGES IN THE AMPLIFIER CAN BE FATAL!!!

**REAR VIEW
CAD-300SE**

**REAR VIEW
CAD-300SE**

NOTE: THE BOTTOM PLATE IN THIS CASE MUST BE DRILLED TO ALLOW THE CABLES TO BE CONNECTED. A GROHMET MUST BE INSERTED IN THE HOLE TO PROTECT THE HOOK UP CABLE.



RING WIRES THROUGH HOLES IN BOTTOM PLATE BEFORE CONNECTING TO CAPACITORS IN DRAWINGS #1 AND #2.

BRING WIRES THROUGH HOLES ON BOTTOM PLATE BEFORE CONNECTING TO CAPACITORS IN DRAWINGS #1 AND #2.

BOTTOM VIEW

POWER BANK

BOTTOM PLATE

BOTTOM PLATE

**HOOK-UP FOR AMPLIFIER(S) WITH
5 PIN DIN CONNECTORS
(SEE FIGURE 2)**

- (1.) Make sure the amplifier(s) have been off for at least 2 hours.**
- (2.) Plug the 5pin DIN with 2 gray cables at one end into the capacitor bank.**
- (3.) Plug each 5 pin DIN into the amplifier(s).**
- (4.) If you have mono blocks your cable will be as shown in Figure 2.
If you have a stereo unit then it will be a single cable.**

CAUTION:

**NEVER REMOVE THE HIGH VOLTAGE PLUGS
WHILE THE AMPLIFIERS ARE OPERATING!**

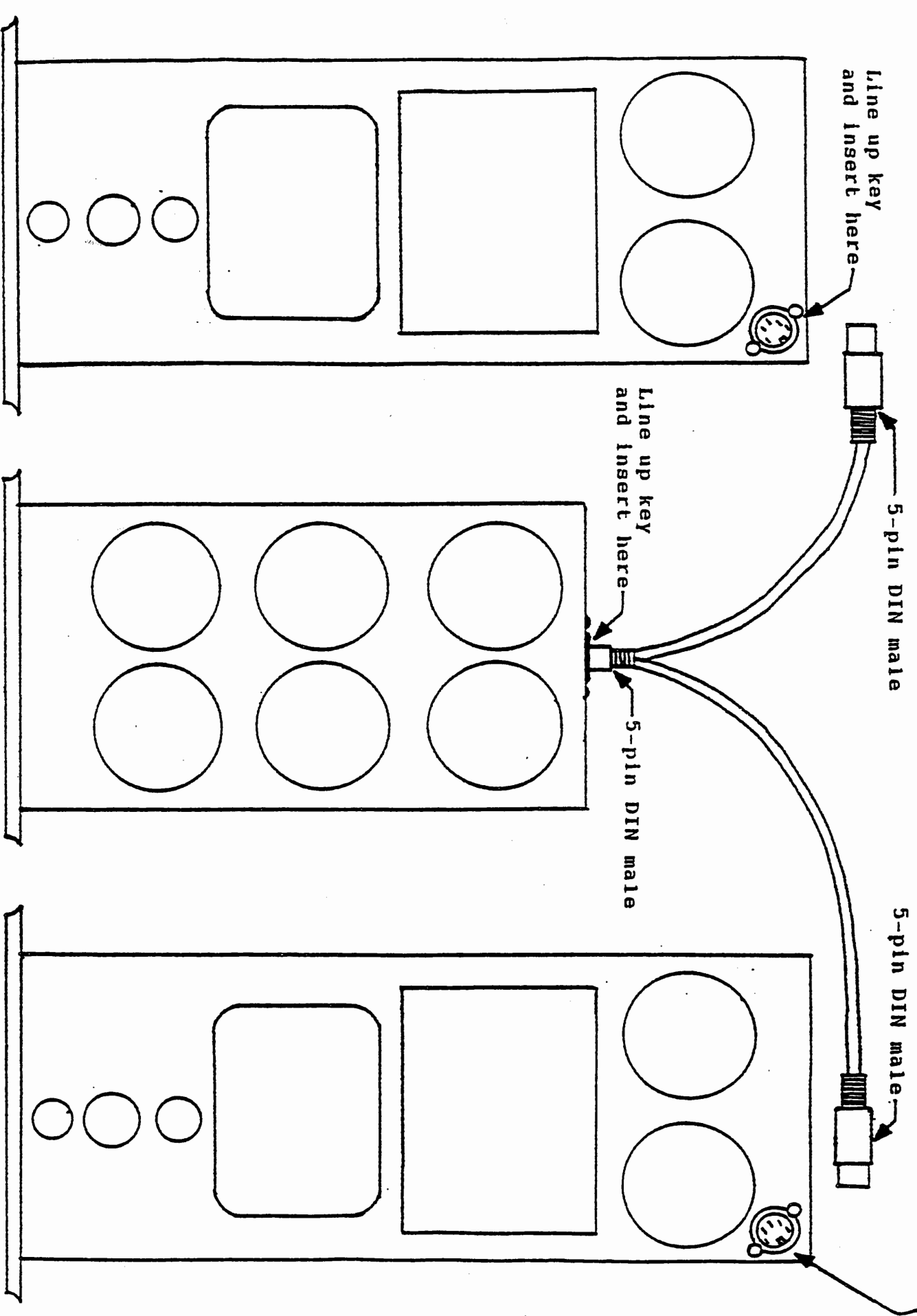
**WAIT 2 HOURS AFTER THE AC POWER HAS BEEN SWITCHED "OFF"
WITH AC POWER CORDS REMOVED FROM MAINS BEFORE
UNPLUGGING THE SE-POWER BANK FROM THE CAD-300SE'S!!**

**DO NOT OPERATE EITHER THE AMPLIFIER OR THE SE-POWER BANK
WITH THE BOTTOM COVER REMOVED!!!**

DANGER!!!

HIGH VOLTAGE!

Figure 2: For amplifiers with 5-pin DIN connectors. Line up key and insert here



WARNING!!! DO NOT CONNECT THE CAPACITOR BANK TO AN AMPLIFIER THAT IS ON OR HAS BEEN ON WITHIN 2 HOURS. DAMAGE TO THE UNIT AND CONNECTORS WILL OCCUR!!!

Notes